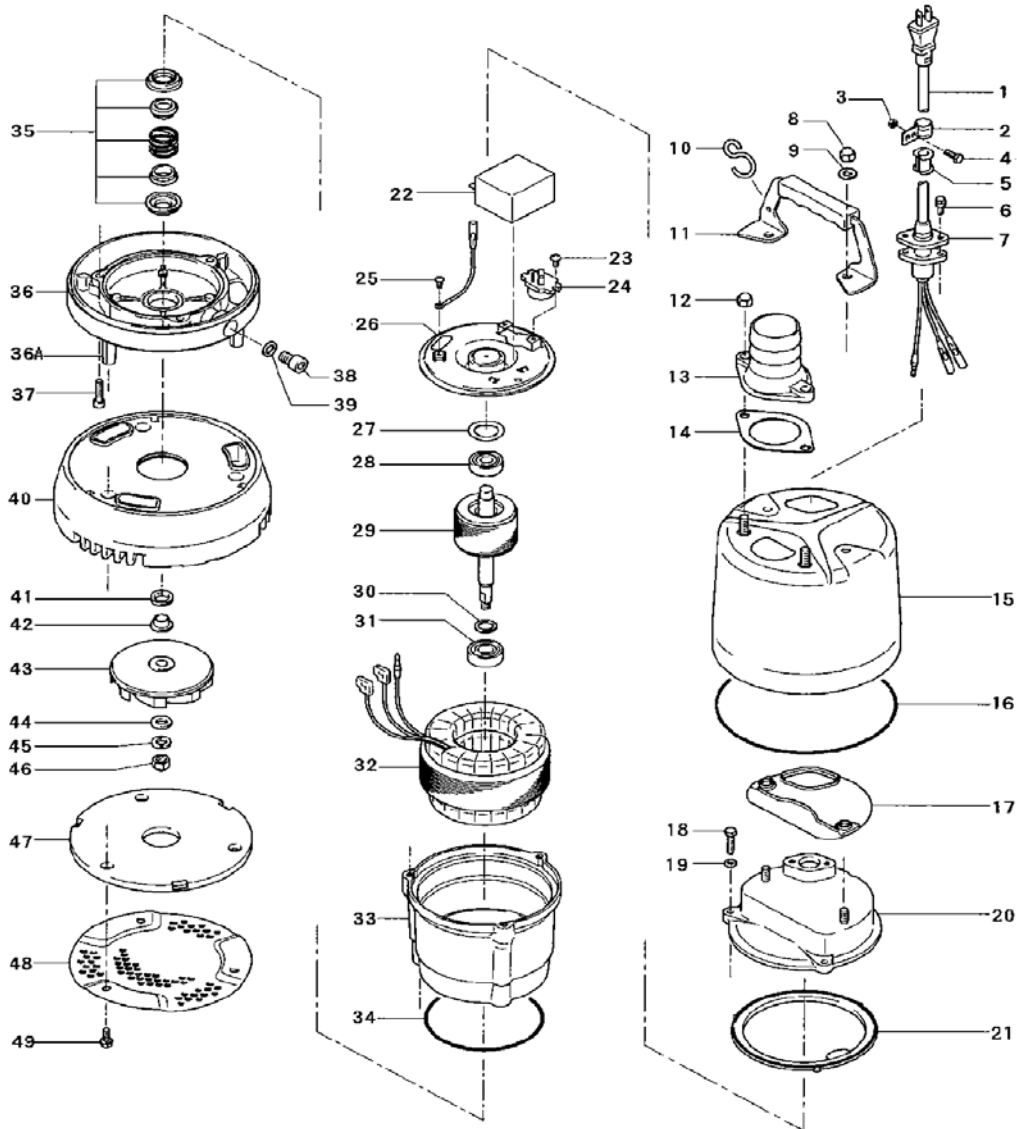


PARTS LIST		CONTRACTOR PUMPS			11/5/2013	
ITEM	PART No.	DESCRIPTION	QTY	SIZE	MATERIAL	NOTES
1	001-943-23	Cabtyre Cable Set	1	3Cx16AWG (32')		
2	141-003-58	Hex.Nut	1	M5	SWRM	
3	010-105-10	Cable Clip	1	SB	SPC	
4	140-018-37	Hex.Bolt	1	M5x15	SWRM	
5	010-126-17	Cable Clip Rubber	1	HS2	NBR	
6	140-427-17	Hex.Bolt (w/Plain Washer)	2	M5x15	SUS304	
7	003-190-10	Gland	1		SUS316	
8	141-030-38	Hex.Cap Nut	2	M8(B=12)	SUS304	
9	142-127-10	Plain Washer	2	M8	SUS304	
10	011-100-18	Shackle	1	S-8	SS	
11	068-251-11	Handle	1	LB3-250/480	SPC+NBR	
12	141-030-38	Hex.Cap Nut	2	M8(B=12)	SUS304	
13	032-000-68	Hose Coupling	1	50mm(LB2-480)	ADC	
14	121-138-19	Packing	1	LB(P.C.84)	NBR	*
15	065-359-11	Outer Cover	1	LSR2.4S-50/60	SPC	
16	122-453-16	O-Ring	1	172xd2.7	NBR	*
17	121-434-18	Packing	1	LB3-250/480	Synthetic Rubber	*
18	140-036-15	Hex.Bolt	3	M6x25	SUS304	
19	142-126-19	Plain Washer	3	M6	SUS304	
20	051-251-19	Motor Head Cover	1		ADC	
21	121-546-14	Packing	1	d120xd142x6.2t	NBR	* alternate# 121-439-13
22	076-136-14	Capacitor	1			
23	143-136-15	Truss Screw	2	M4x10	SWRM	
24	053-400-11	Motor Protector	1			
25	143-073-26	Pan Screw	1	M4x4	C3604	
26	050-451-18	Motor Bracket	1		SECD	
27	142-192-16	Wave Washer	1	6201(D=32,t=0.4)	SK5	
28	052-100-15	Bearing	1	6201ZZC3		
29	055-773-14	Rotor	1Set	w/Bearing		
30	061-180-17	Bearing Collar	1	d15.1xd20x1.6t	SS	
31	052-101-16	Bearing	1	6202ZZC3		
32	056-685-11	Stator	1			
33	064-508-14	Motor Frame	1		ADC	
34	122-133-17	O-Ring	1	G-110(109.4xd3.1)	NBR	*
35	025-000-05	Mechanical Seal	1	W-14VC	SSIC	
36	029-000-38	Oil Casing	1Set	LB3-250/480	ADC	
36A	144-560-15	Stud Bolt	3	M8x54.5	SUS304	
37	140-253-10	Hex.Socket Cap Bolt	3	M6x25	SUS304	
38	035-124-12	Oil Plug	1	M10x15	SUS304	
39	121-246-11	Packing	1	d10.3xd16x2t	PE	*
40	020-991-12	Pump Casing	1	LSR2.4S-50/60	Synthetic Rubber	
41	122-441-11	V-Ring	1	VR-14	NBR	
42	071-292-14	Shaft Sleeve	1	LB3-250/480	SUS304	
43	021-007-43	Impeller (50Hz)	1	LSR2.4S-50	Urethane Rubber	

PARTS LIST		CONTRACTOR PUMPS				11/5/2013
ITEM	PART No.	DESCRIPTION	QTY	SIZE	MATERIAL	NOTES

分解組立図

LSR2.4S-50/60



管理 no. C-00240-1